

# INSTALLATION INSTRUCTIONS AND PARTS LIST

## FOR MOUNTING 401472 GRIP STEPS PASSENGER SIDE ONLY (FULL LENGTH) 2014-NEWER RAM PROMASTER VANS

READ INSTRUCTIONS COMPLETELY AND CHECK TO MAKE SURE THAT ALL REQUIRED PARTS (LISTED ON SERVICE PARTS LIST) ARE ON HAND BEFORE STARTING THE INSTALLATION.

1. PREASSEMBLE FRONT BRACKETS (ITEM 1) WITH SPACER BRACKETS (ITEM 4), USING THE 5/16-18 ZINC PLATED BOLTS WITH THE 5/16" WASHERS AND THE FLANGE NUTS (ITEMS 8, 9 & 10). HAND TIGHTEN ONLY AT THIS TIME. **SEE FIG. 1.**
2. PREASSEMBLE THREE REAR BRACKETS (ITEM 3) WITH SPACER BRACKETS (ITEM 6), USING THE 5/16-18 ZINC PLATED BOLTS WITH THE 5/16" WASHERS AND THE FLANGE NUTS (ITEMS 8, 9 & 10). HAND TIGHTEN ONLY AT THIS TIME. **SEE FIG. 2.**
3. MARK THE PINCH WELD FOR THE FRONT HOLE OF EACH BRACKET. **SEE FIG. 3.** LINE UP EACH BRACKET WITH THE HOLE LOCATION AND MARK THE SECOND HOLE. REMOVE THE BRACKETS AND DRILL A 11/32" HOLE THROUGH THE CENTER OF THE PINCH WELD AT EACH LOCATION.
4. **ATTACHING THE FIRST, THIRD, FOURTH, AND FIFTH BRACKETS:**
  - 4.1 FASTEN THE BRACKET ASSEMBLIES TO THE OUTSIDE OF THE PINCH WELD USING THE 5/16-18 X 1.0" BLACK BOLTS, 5/16" BLACK WASHERS, FLANGE NUTS, AND GALVANIZED SPACER PLATE. (ITEMS 5, 9, 11 & 12).
  - 4.2 THE TOP HOLE WILL BE DRILLED LATER.
5. **ATTACHING THE SECOND BRACKET:** SEE IN FIG. 4.
  - 5.1 PLACE THE SECOND BRACKET (ITEM 3) UP TO THE INSIDE OF THE PINCH WELD AND SECURE IT USING A CLAMP.
  - 5.2 USING THE 5/16-18 X 1.0" BOLTS TO LINE UP THE HOLES IN THE PINCH WELD WITH THE BRACKET, MARK THE CENTER OF (2) HOLES ON THE HORIZONTAL SURFACE ON THE BOTTOMM OF THE VEHICLE AND REMOVE THE BRACKET FOR DRILLING. THE HOLE TOWARD THE REAR WILL BE DRILLED USING A 11/32" DRILL BIT. THE HOLE TOWARD THE FRONT OF THE VEHICLE WILL BE DRILLED WITH A 3/16" DRILL BIT.
  - 5.3 REMOVE THE BODY PLUG ON THE HORIZONTAL SURFACE TOWARD THE REAR OF THE VEHICLE, A 11/32 HOLE SHOULD HAVE BEEN DRILLED NEAR THE BODY PLUG. SOME UNDER COATING WILL NEED TO BE REMOVED. SLIDE THE 1/4-20 U-NUT (ITEM 13) INTO THE LARGER ACCESS HOLE AND SNAP IN PLACE SO THE THREADS ARE ABOVE THE 11/32" HOLE.
  - 5.4 FASTEN THE BRACKET TO THE PINCH WELD USING THE 5/16-18 BLACK BOLTS, WASHERS, NUTS, AND SMALL RETAINER PLATE (ITEMS 7, 9, 11 & 12). LEAVE THEM LOOSE AT THIS TIME. LOCATE THE U-NUT (ITEM 13) AND INSTALL THE 1/4-20 BOLT AND WASHER (ITEMS 14, & 15). LOCATE THE 3/16" HOLE AND FASTEN USING THE 5/16 X 3/4" SELF TAPPING SCREW (ITEM 16).
  - 5.5 TIGHTEN ALL FASTENERS FOR THE SECOND BRACKET AT THIS TIME.
6. PLACE THE RUNNING BOARD ON TOP OF THE BRACKETS, LEVEL THEM OUT WITH THE PINCH WELD AND SNUG UP THE BRACKET ASSEMBLIES AND MARK THE UPPER HOLE LOCATIONS. THEN REMOVE THE BRACKETS.



7. **DRILLING THE TOP HOLE OF THE FRONT BRACKET:** SEE IN FIG. 4.  
DRILL A 11/32" HOLE AT THE MARKED LOCATION, REMOVE THE ADJACENT BODY PLUG AND INSTALL THE U-NUT (ITEM 13) THROUGH THE BODY PLUG HOLE. POSITION IT OVER THE 11/32" HOLE. (SOME UNDER COATING MAY NEED TO BE REMOVED IN ORDER TO INSTALL THE U-NUT PROPERLY). REINSTALL THE BRACKET ASSEMBLY USING THE BLACK PINCH WELD BOLTS, AND THE 1/4-20 BOLT, AND WASHER (ITEMS 14 & 15). TIGHTEN ALL FASTENERS AT THIS TIME.
8. **DRILLING TOP HOLE OF THE REAR THREE BRACKETS:** SEE IN FIG. 4.  
DRILL A 3/16" HOLE AT ONE OF THE TOP MARKED LOCATION FOR EACH BRACKET. REINSTALL THE BRACKET ASSEMBLY USING THE BLACK PINCH WELD BOLTS, AND THE 5/16" SELF-TAPPING SCREW AND ZINC PLATED WASHER (ITEMS 16 & 10.) TIGHTEN ALL FASTENERS AT THIS TIME.

### SERVICE PARTS LIST

ITEM	PART NO.	QTY	DESCRIPTION
1	552405	1	MTG-BRKT, FRNT, PROMSTR, 12 GA, LH/RH GRIP
2	552406	3	MTG-BRKT, REAR, PROMSTR, 12GA, LH/RH GRIP
3	552408	1	MTG-BRKT, MIDDLE RH GRIP
4	552288	1	SPACER BRACKET, 7 GA, BLACK
5	552289	4	RETAINER PLATE, GALVANIZED
6	552409	3	SPACER BRACKET, 7 GA, BLACK
7	552410	1	RETAINER PLATE, GALVANIZED
8	100647	4	SCR-HEX HEAD, 5/16-18 X 1.00 STL, ZINC PLATED
9	100178	14	NUT-HEX FLG, 5/16-18, ZINC PLATED
10	100034	8	WASHER-FL, 5/16, ZINC PLATED
11	106997	10	SCR-HEX HEAD, 5/16-18 X 1.0, SST, BLACK ZINC PLTD
12	106998	10	WASHER-FL, 5/16, BLACK ZINC PLATED
13	106604	2	NUT-U, MULTI THD, LG, 1/4-20, BLACK
14	100006	2	SCR-HEX HEAD, 1/4-20 X 3/4", ZINC PLATED
15	100016	2	WASHER-FL, 1/4, ZINC PLATED
16	104267	5	SELF TAPPING SCREW, STL, 5/16 X .750



(A LUVERNE Company)

1200 E. Birch St.

Brandon, SD 57005

552510 SHEET 2 OF 4 12OCT15

SERVICE PARTS LIST

BRACKET NO. - 401472

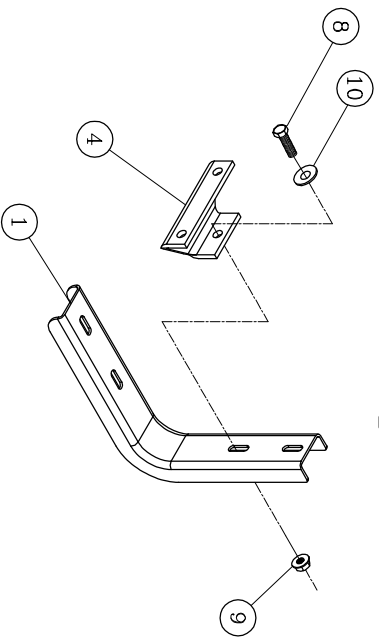


fig.1

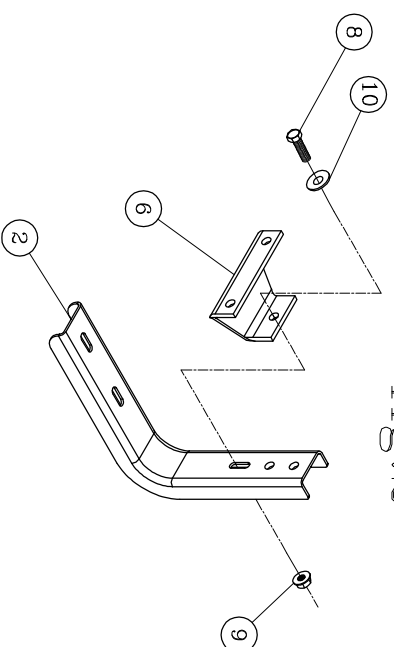


fig.2

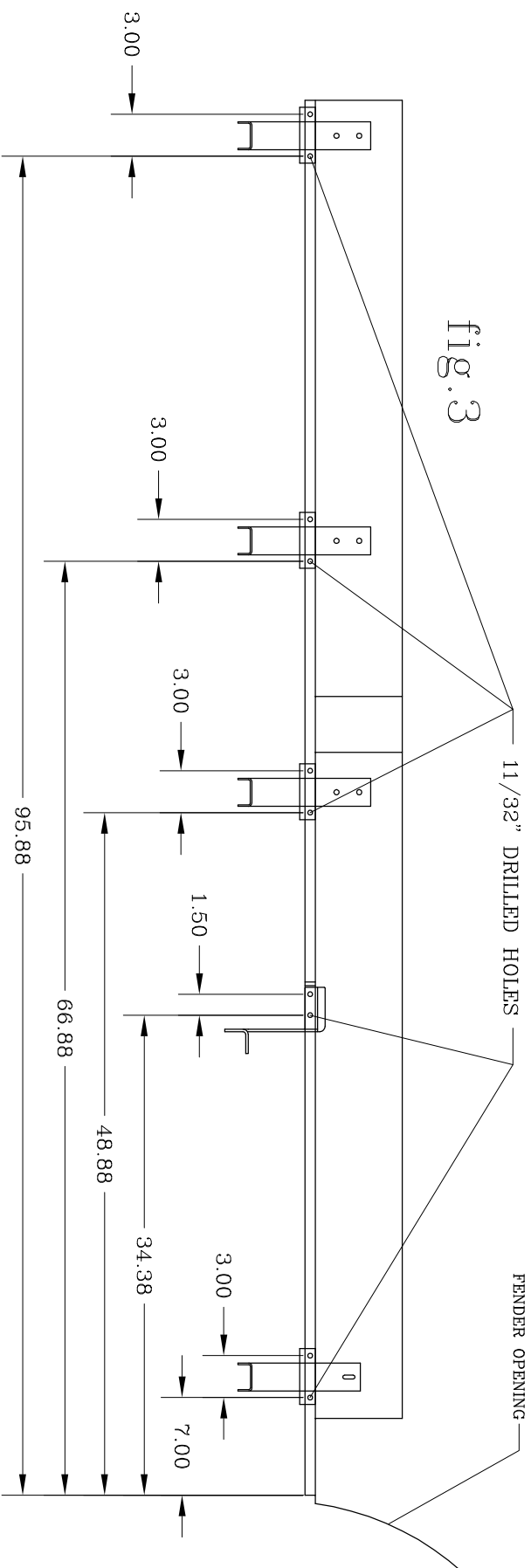
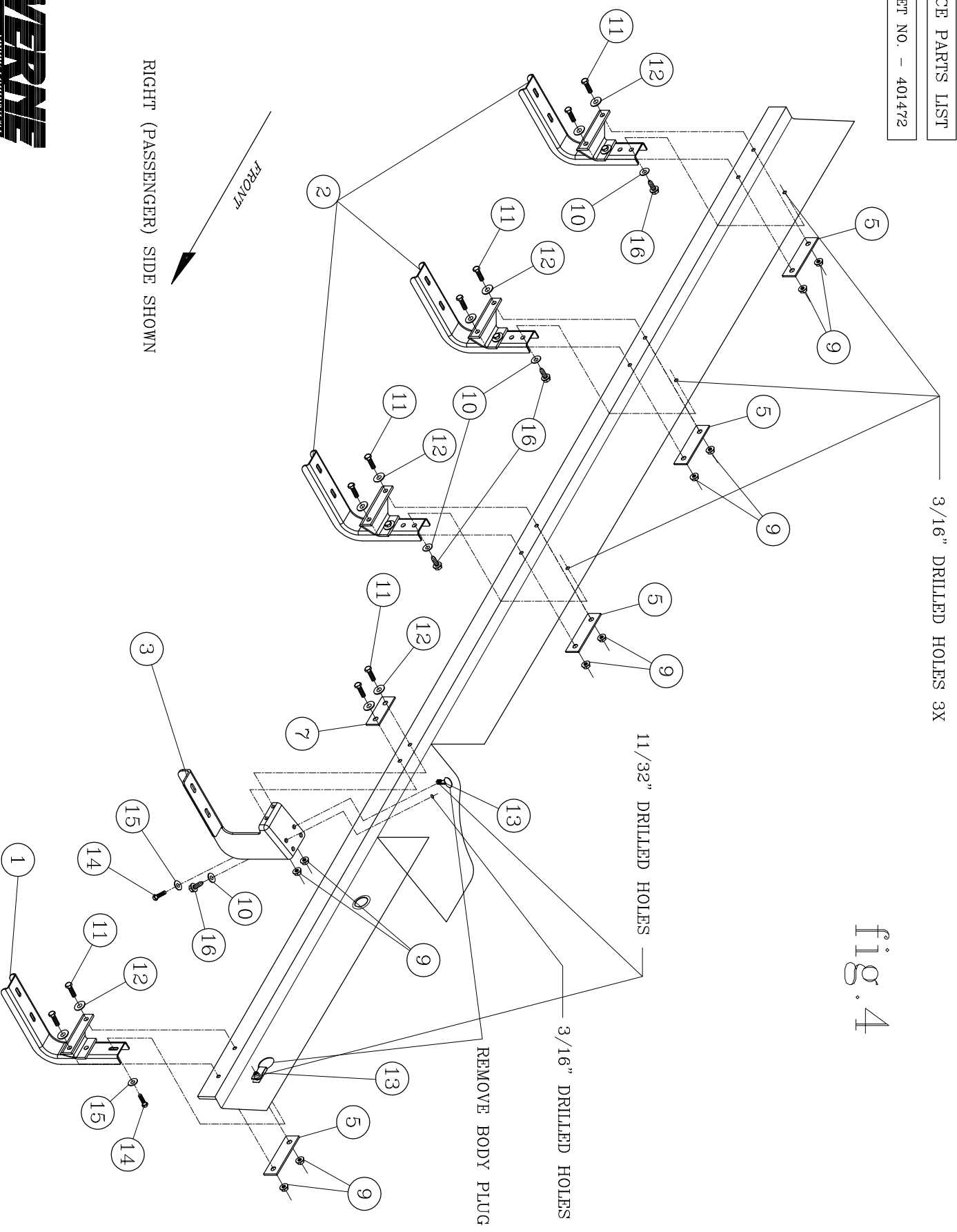


fig.3

SERVICE PARTS LIST

BRACKET NO. - 401472

fig.4



RIGHT (PASSENGER) SIDE SHOWN

FRONT